

Deltaplast Swing Line Series Co-Extruders

Fully adjustable Co-Extruders in both the vertical and horizontal positions. Allowing for various coextrusion die entry points and heights. Custom designed base configurations available for optimum access to your production line application. Engineered and manufactured for top performance and durability utilizing precision manufactured long life components to add reliability and productivity to your operation. Size ranges from 3/4" to 2". Various L/D ratios, as well as related processing equipment. Rugged equipment built without compromise for long term productivity and performance.

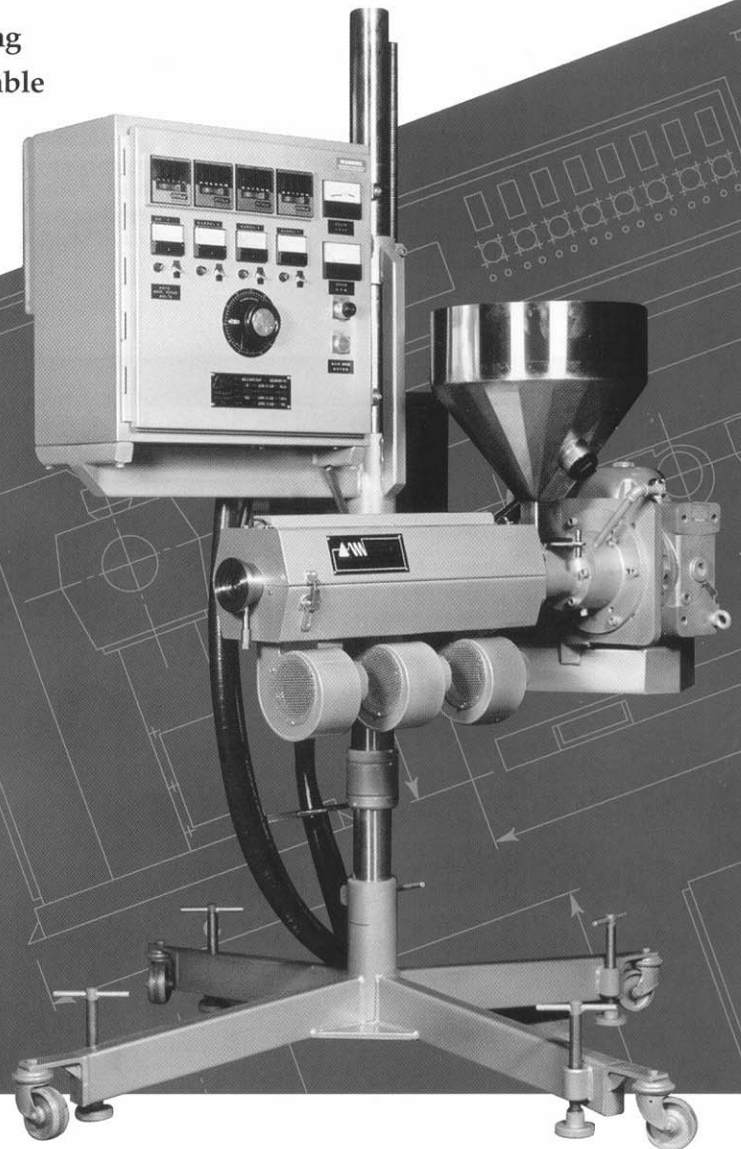
Features:

- Vertical
- Horizontal
- Independent or column Mounted Panel
- Automatic Air cooling
- Caster Mounted
- Versatile
- Space efficient

*Built without
compromise.*

Ideal for the following industries:

- Profile
- Pipe
- Blowmolding
- Wire and Cable
- Sheet



DELTAPLAST MACHINERY LTD.

130 Staffern Drive, Concord, Ontario L4K 2X3 Canada Tel: (905) 669-2966 Fax: (905) 669-2336

Extruder Drive

Digital DC, AC vector or brushless DC drive systems available for all polymer applications. Connected to gear reducer via fully guarded matched belts and sheaves allowing interchangeability to meet different torque and speed requirements.

Gear Reducer

Single reduction worm gear reducer with generous mechanical and thermal ratings. Self contained splash type oil bath.

Thrust Assembly

Heavy duty cylindrical roller type bearings mounted in a separate thrust housing with its own oil bath which does not allow any cross contamination with the gear reducer.

Feed Throat

High density class 40 iron casting jacketed for water cooling. Large rectangular feed hole with extended bimetallic barrel liner. A high capacity hopper complete with sight glass and dump chute is included.

Barrel heating and cooling

Processing control achieved via maxiband aluminum heating elements, each zone individually shrouded to guide cooling air directly over barrel elements. Cooling air provided by externally mounted blowers.

Barrel

Centrifugal cast bimetallic lined barrel, base material 4140 or JP38 Tube steel, precision machined taper grip flanges threaded and welded for added strength. Designed for maximum operating pressures of 10,000 PSI. Optionally available superior corrosion, wear resistant linings.

Base

Heavy duty post mounted base plate with vertical and horizontal adjustment capability via ratchet adjustment mechanism giving full range of motion. Four leg caster mounting with position locking screws. Configurable in right to left or left to right positions. Other base foot configurations available.

Screw

Single stage metering type, base material pre hardened 4140, chrome plated, colmonoy hardened flights.

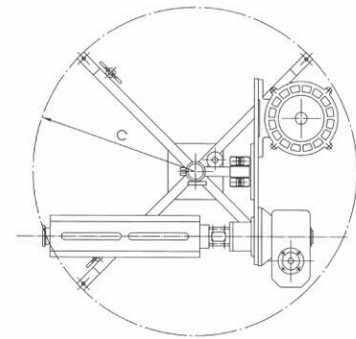
Special performance designs engineered to suit individual applications for superior outputs and melt quality available. Including barrier type and special mixing sections.

Clamp

Two piece taper grip clamp with single swing bolt fastening capability provides positive seal and alignment between barrel and adaptor flange. Co extrusion adaptor with heater band and feed tube included.

Control Cabinet

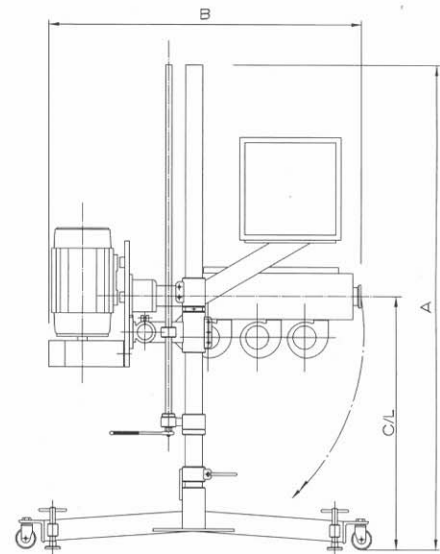
Post or remote caster mounted control panel containing microprocessor based temperature controllers, circuit breakers, ammeters, load contactors, and control transformer for each barrel and die zone. The drive operator keypad station contains the following; speed regulation, start/stop, screw speed indicator, load indicator as well as other drive data and fault indicators. Power requirements 230/3/60 standard, 460/3/60 or 575/3/60 available.



SIZE	RATIO	APPROXIMATE WEIGHT	A	B	C	C/L
3/4 in 20 mm	24:1	800 lbs. 365 kg.	88 in 2235 mm	33 in 840 mm	30 in 765 mm	40 - 72 in 1015 - 1830 mm
1 in 25 mm	24:1	900 lbs. 410 kg.	88 in 2235 mm	39 in 990 mm	30 in 765 mm	40 - 72 in 1015 - 1830 mm
1-1/4 in 30 mm	24:1	1250 lbs. 570 kg.	88 in 2235 mm	53 in 1345 mm	34 in 865 mm	40 - 72 in 1015 - 1830 mm
1-1/2 in 40 mm	24:1	1575 lbs. 715 kg.	94 in 2390 mm	59 in 1500 mm	34 in 865 mm	40 - 72 in 1015 - 1830 mm
1-3/4 in 45 mm	24:1	1790 lbs. 815 kg.	110 in 2795 mm	71 in 1805 mm	60 in 1525 mm	36 - 56 in 915 - 1425 mm
2 in 50 mm	24:1	2200 lbs. 1000 kg.	115 in 2925 mm	77 in 1955 mm	60 in 1525 mm	36 - 56 in 915 - 1425 mm

SIZE	L/D RATIO	STD. DRIVE HP	REDUCTION RATIO	AGMA HP RATING	THRUST BEARING AVG. B10 LIFE HOURS	# OF ZONES	TOTAL KW	CFM
3/4 in 20 mm	24:1	3	15:1	5.72	210,000	2	2.5	75
1 in 25 mm	24:1	3	15:1	5.72	210,000	2	2.5	75
1-1/4 in 30 mm	24:1	5	15:1	13.9	190,000	3	6.5	130
1-1/2 in 40 mm	24:1	7.5	15:1	13.9	150,000	3	7.5	240
1-3/4 in 45 mm	24:1	10	15:1	23.1	150,000	3	10.8	240
2 in 50 mm	24:1	15	15:1	44.4	725,000	3	12.5	400

Please note: Our continuous improvement of product lines may make dimensions and specifications subject to change without notice.



DELTA PLAST MACHINERY LTD.

130 Staffern Drive, Concord, Ontario L4K 2X3 Canada
Tel: (905) 669-2966 Fax: (905) 699-2336

Printed in Canada